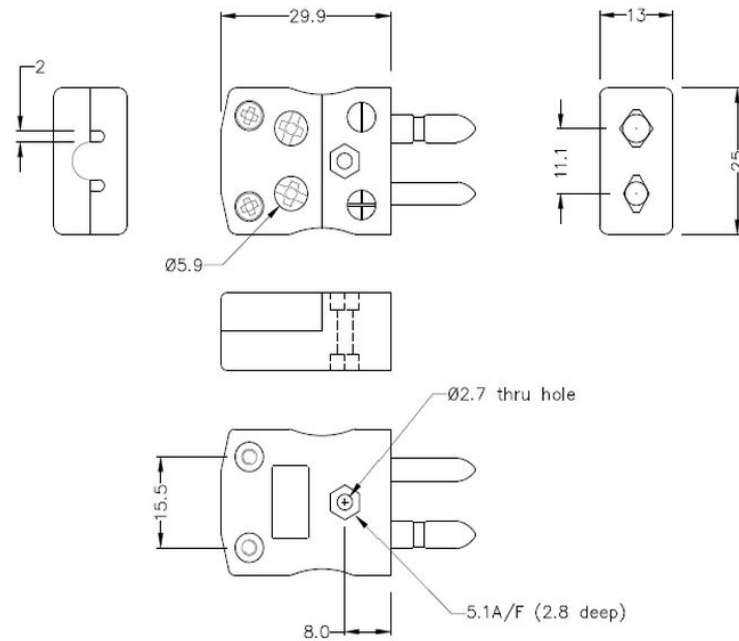
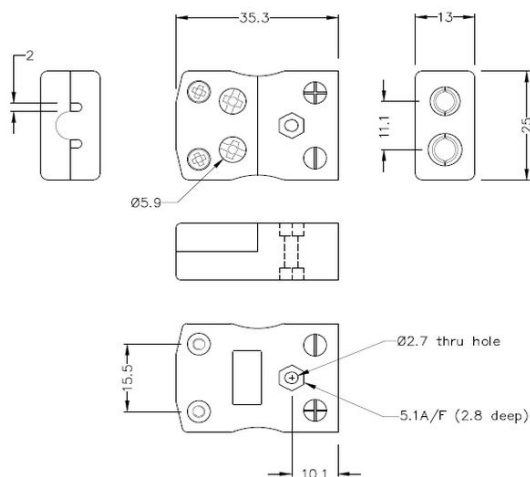


Standard Quick Wire Thermocouple Stecker & Socket IS-CU-MQ+FQ Typ CU IEC



Standard in-line Plug - Quick Wire
(dimensions in mm)



Standard in-line Socket - Quick Wire
(dimensions in mm)



Labfacility are the UK's leading manufacturer of Temperature Sensors, Thermocouple Connectors and associated Temperature Instrumentation and stockings of Thermocouple Cables. The Company has been trading since 1971 and is ISO9001 accredited.

Standard Quick Wire Thermocouple Stecker & Sockel IS-CU-MQ+FQ Typ CU IEC

Einfache "Jab-in" Verbindung für schnelle Beendigung, drücken Sie einfach Draht in und ziehen Sie Schraube.
Kontakte werden polarisiert, um eine falsche Verbindung zu verhindern

Spezifikationen**Specifications**

Product Code	XE-1057-001
General Description	Easy 'jab-in' connection for rapid termination, contacts are polarised to prevent incorrect connection
Thermocouple Type	CU IEC
Connector Size	Standard
Connector Type	Quick Wire Plug & Socket
Colour	White
Max. Temperature	220°C
Pins	Solid Round Pins
+Positive Contact	Copper
-Negative Contact	Copper
Standards Met	BS EN 50212:1997. RoHS