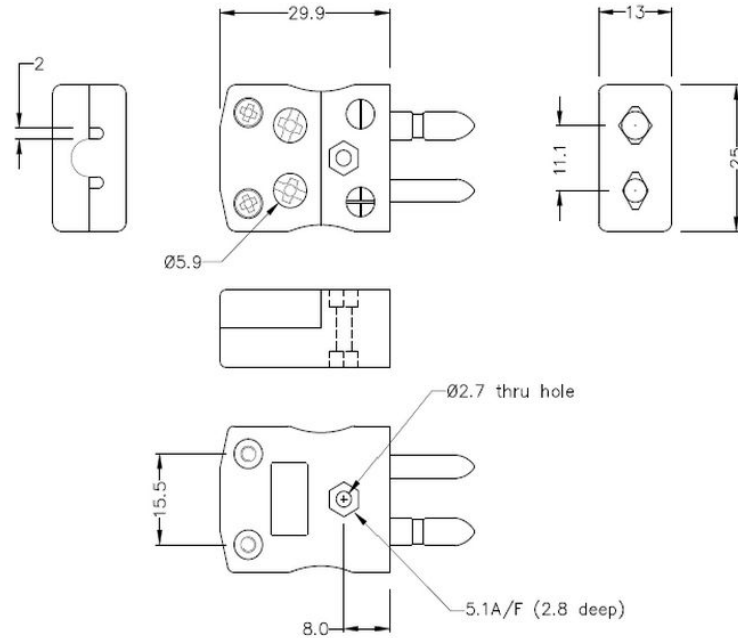


Standard Quick Wire Thermoelement Connector Schnelldrahtstecker & Sockel JS-CU-MQ+FQ Typ CU JIS



Standard in-line Plug - Quick Wire
(dimensions in mm)



Standard in-line Socket - Quick Wire
(dimensions in mm)



Labfacility are the UK's leading manufacturer of Temperature Sensors, Thermocouple Connectors and associated Temperature Instrumentation and stockings of Thermocouple Cables. The Company has been trading since 1971 and is ISO9001 accredited.

Standard Thermoelement Stecker Schnelldrahtstecker & Sockel JS-CU-MQ+FQ Typ CU JIS

Standard-Schnelldrahtstecker mit massiven Rundstiften. Einfacher Jab-in-Anschluss für schnelle Beendigung.
Einfach einschieben Draht & Ziehen Sie Schraube.

Spezifikationen**Specifications**

Product Code	XE-1087-001
General Description	Easy 'jab-in' connection for rapid termination, contacts are polarised to prevent incorrect connection
Thermocouple Type	CU JIS
Connector Size	Standard
Connector Type	Quick Wire Plug & Socket
Colour	White
Max. Temperature	220°C
Pins	Solid Round Pins
+Positive Contact	Copper
-Negative Contact	Copper
Standards Met	BS EN 50212:1997. RoHS