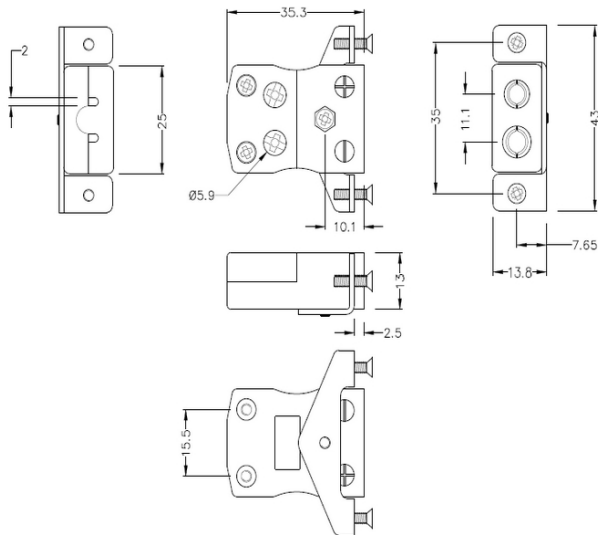
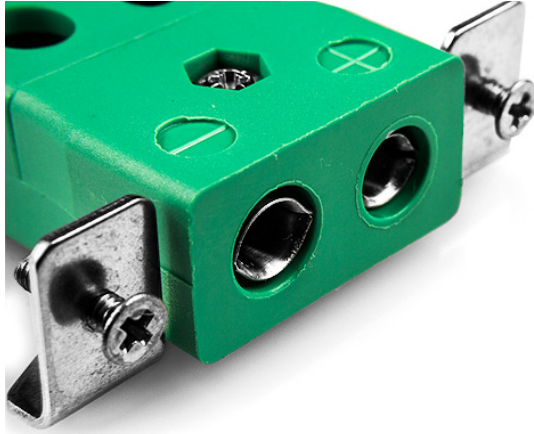
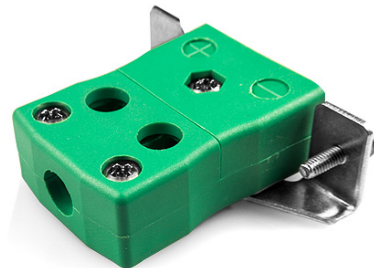


Standard Quick Wire Panel Halterung mit Edelsthalterung AS-R/S-SSPFQ Typ R/S ANSI



Standard Socket - Quick Wire with stainless steel mounting bracket
(dimensions in mm)



Labfacility are the UK's leading manufacturer of Temperature Sensors, Thermocouple Connectors and associated Temperature Instrumentation and stockings of Thermocouple Cables. The Company has been trading since 1971 and is ISO9001 accredited.

Standard Quick Wire Panel Mount Thermoelement Connector mit Edelstahlhalterung AS-R/S-SSPFQ Typ R/S ANSI

Für den Einsatz in eher industriellen Prozessen vorgesehen, kann aber in allen Anwendungen nach Belieben eingesetzt werden. Einfache "Jab-in"-Verbindung für schnelle Beendigung, einfach Draht einschieben und Schraube anziehen

Spezifikationen**Specifications**

Product Code	XE-1619-001
General Description	Easy 'jab-in' connection for rapid termination, just push wire in and tighten screw
Thermocouple Type	R/S ANSI
Connector Type	Quick Wire Socket with SS Bracket
Connector Size	Standard
Colour	Green
Max. Temperature	220°C
+Positive Contact	Copper
-Negative Contact	Copper Alloy
Standards Met	BS EN 50212:1997. RoHS