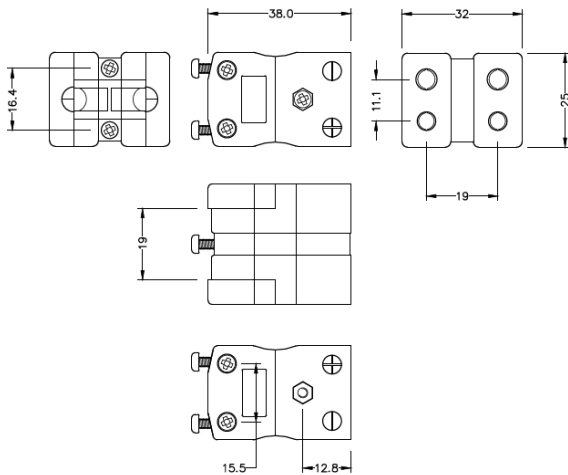


Standard Thermoelement Connector Duplex-Socket AS-T-FD Typ T ANSI



Standard Duplex in-line Socket
(dimensions in mm)



Labfacility are the UK's leading manufacturer of Temperature Sensors, Thermocouple Connectors and associated Temperature Instrumentation and stockings of Thermocouple Cables. The Company has been trading since 1971 and is ISO9001 accredited.

Standard Thermoelement Connector Duplex-Sockel AS-T-FD Typ T ANSI

Robuste glasgefüllte Polyester-Körper. Kontakte werden polarisiert, um eine falsche Verbindung zu verhindern

Spezifikationen**Specifications**

Product Code	XE-1537-001
General Description	Rugged glass filled polyester bodies, suitable for industrial applications.
Thermocouple Type	T ANSI
Connector Type	Duplex Socket
Connector Size	Standard
Colour	Blue
Dimensions	See Schematic Drawing (Product Literature Tab)
Max. Temperature	220°C
+Positive Contact	Copper
-Negative Contact	Copper Nickel
Standards Met	BS EN 50212:1997. RoHS