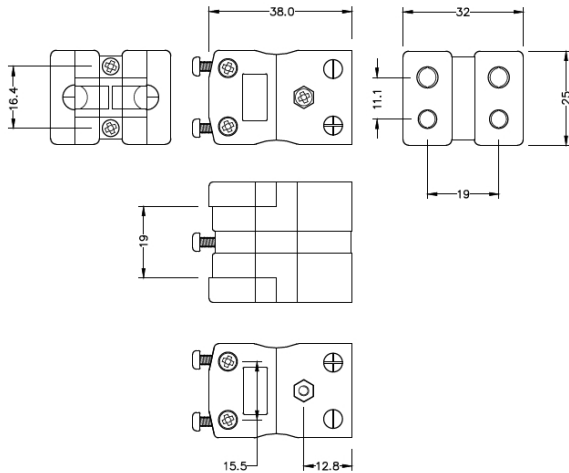


## Standard Thermoelement Connector Duplex-Socket AS-E-FD Typ E ANSI



**Standard Duplex in-line Socket**  
(dimensions in mm)



Labfacility are the UK's leading manufacturer of Temperature Sensors, Thermocouple Connectors and associated Temperature Instrumentation and stockings of Thermocouple Cables. The Company has been trading since 1971 and is ISO9001 accredited.

**Standard Thermoelement Connector Duplex-Sockel AS-E-FD Typ E ANSI**

Robuste glasgefüllte Polyester-Körper. Kontakte werden polarisiert, um eine falsche Verbindung zu verhindern

**Spezifikationen****Specifications**

|                            |   |
|----------------------------|---|
| <b>Product Code</b>        | XE-9127-001   |
| <b>General Description</b> | Rugged glass filled polyester bodies, suitable for industrial applications. |
| <b>Thermocouple Type</b>   | E ANSI  |
| <b>Connector Type</b>      | Duplex Socket   |
| <b>Connector Size</b>      | Standard  |
| <b>Colour</b>              | Violet  |
| <b>Dimensions</b>          | See Schematic Drawing (Product Literature Tab)                              |
| <b>Max. Temperature</b>    | 220°C   |
| <b>+Positive Contact</b>   | Nickel Chromium   |
| <b>-Negative Contact</b>   | Copper Nickel   |
| <b>Standards Met</b>       | BS EN 50212:1997. RoHS  |