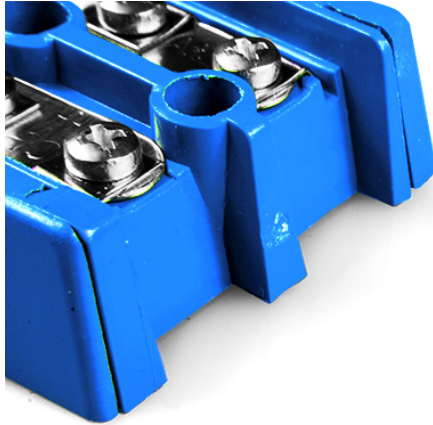


## Barriereklemme ThermoelementStecker AS-T-BTS Typ T ANSI



Labfacility are the UK's leading manufacturer of Temperature Sensors, Thermocouple Connectors and associated Temperature Instrumentation and stockings of Thermocouple Cables. The Company has been trading since 1971 and is ISO9001 accredited.

**Barriereklemme ThermoelementStecker AS-T-BTS Typ T ANSI**

Lieferung in einzelnen, ineinandergreifenden Paaren. Anschlüsse im Thermoelementmaterial

**Spezifikationen****Specifications**

<b>Product Code</b>	XE-1952-001
<b>General Description</b>	Supplied in single, interlocking pairs. Connections in thermocouple material
<b>Thermocouple Type</b>	T ANSI
<b>Connector Type</b>	Barrier Terminal Blocks
<b>Colour</b>	Blue
<b>Dimensions</b>	See Schematic Drawing (Product Literature Tab)
<b>Max. Temperature</b>	220°C
<b>+Positive Contact</b>	Copper
<b>-Negative Contact</b>	Copper Nickel
<b>Standards Met</b>	BS EN 50212:1997. RoHS