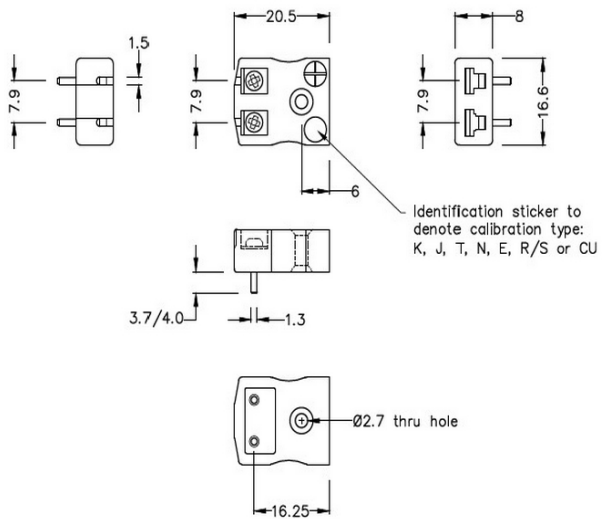
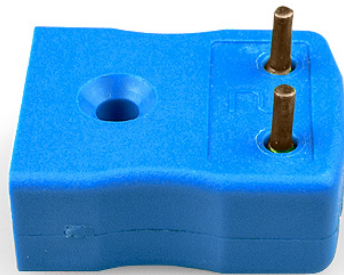


PCB Montage Thermoelement Stecker Socket JM-K-PCB PCB Typ K JIS



Miniature PCB Socket
(dimensions in mm)

Labfacility are the UK's leading manufacturer of Temperature Sensors, Thermocouple Connectors and associated Temperature Instrumentation and stockings of Thermocouple Cables. The Company has been trading since 1971 and is ISO9001 accredited.

PCB Montage Thermoelement Stecker Sockel JM-K-PCB Typ K JIS

Speziell für Leiterplatten, Vollstifte für die direkte Platinenmontage und -versorgung für CJC-Sensoren

Spezifikationen**Specifications**

Product Code	XE-9160-001
General Description	Versatile, high quality circuit board mounting miniature socket
Thermocouple Type	K JIS
Connector Type	PCB socket
Connector Size	Miniature
Colour	Blue
Max. Temperature	220°C
+Positive Contact	Nickel Chromium
-Negative Contact	Nickel Alloy
Standards Met	BS EN 50212:1997. RoHS