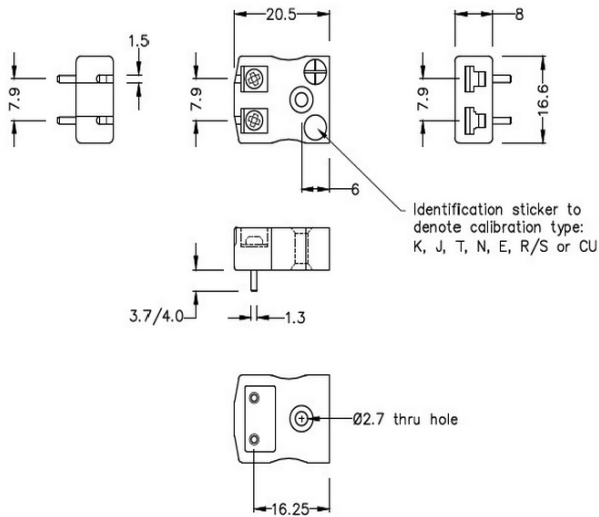
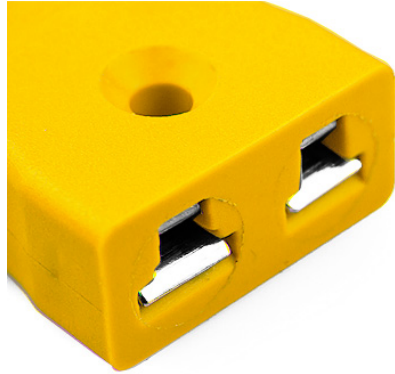


# PCB Montage Thermoelement Stecker Socket JM-J-PCB Typ J JIS



**Miniature PCB Socket**  
(dimensions in mm)



Labfacility are the UK's leading manufacturer of Temperature Sensors, Thermocouple Connectors and associated Temperature Instrumentation and stockings of Thermocouple Cables. The Company has been trading since 1971 and is ISO9001 accredited.

**PCB Montage Thermoelement Stecker Socket JM-J-PCB Typ J JIS**

Speziell für Leiterplatten, Vollstifte für die direkte Platinenmontage und -versorgung für CJC-Sensoren

**Spezifikationen****Specifications**

<b>Product Code</b>	XE-9180-001
<b>General Description</b>	Versatile, high quality circuit board mounting miniature socket
<b>Thermocouple Type</b>	J JIS
<b>Connector Type</b>	PCB socket
<b>Connector Size</b>	Miniature
<b>Colour</b>	Yellow
<b>Max. Temperature</b>	220°C
<b>+Positive Contact</b>	Iron
<b>-Negative Contact</b>	Copper Nickel
<b>Standards Met</b>	BS EN 50212:1997. RoHS