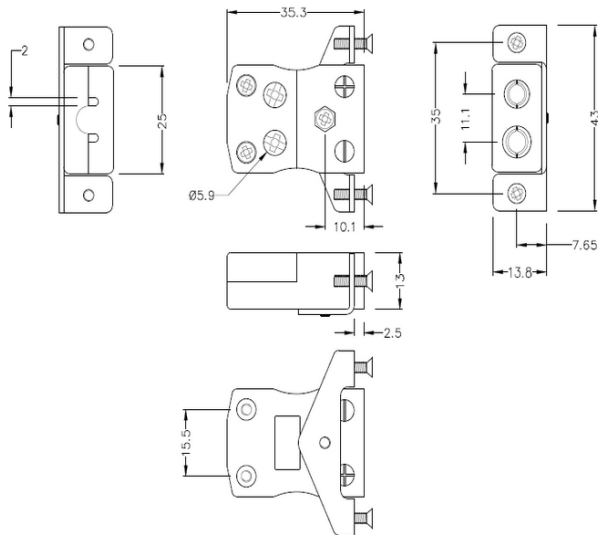
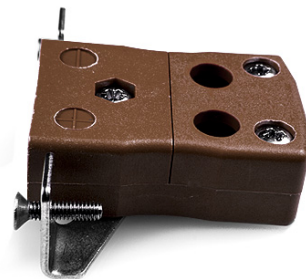


# Standard Quick Wire Panel Mount Thermoelement Connector mit Edelstahlhalterung JS-T-SSPFQ Typ T JIS



**Standard Socket - Quick Wire with stainless steel mounting bracket**  
(dimensions in mm)



Labfacility are the UK's leading manufacturer of Temperature Sensors, Thermocouple Connectors and associated Temperature Instrumentation and stockings of Thermocouple Cables. The Company has been trading since 1971 and is ISO9001 accredited.

**Standard Quick Wire Panel Mount Thermoelement Connector mit Edelstahlhalterung JS-T-SSPFQ Typ T JIS**

Für den Einsatz in eher industriellen Prozessen vorgesehen, kann aber in allen Anwendungen nach Belieben eingesetzt werden. Einfache "Jab-in"-Verbindung für schnelle Beendigung, einfach Draht einschieben und Schraube anziehen

**Spezifikationen**
**Specifications**

<b>Product Code</b>	XE-9379-001
<b>General Description</b>	Easy 'jab-in' connection for rapid termination, just push wire in and tighten screw
<b>Thermocouple Type</b>	T JIS
<b>Connector Type</b>	Quick Wire Socket with SS Bracket
<b>Connector Size</b>	Standard
<b>Colour</b>	Brown
<b>Dimensions</b>	See Schematic Drawing (Product Literature Tab)
<b>Max. Temperature</b>	220°C
<b>+Positive Contact</b>	Copper
<b>-Negative Contact</b>	Copper Nickel
<b>Standards Met</b>	BS EN 50212:1997. RoHS